

Technical Data Sheet V Series

Basic Info

KSF V 114x2100-PT	KSF V 114x1500 -ET	KSF V 114-M24
Nominal length (mm)		
2100	1500	250
Tube diameter (mm)		
114.30	114.30	–
Weight (kg)		
19.60	12.00	4.10
Item number		
25602	25603	25604

Construction

- Flange: Sheet metal S355
- Coating: Hot-dip galvanized according to DIN EN ISO 1461
- Continuous welded helix

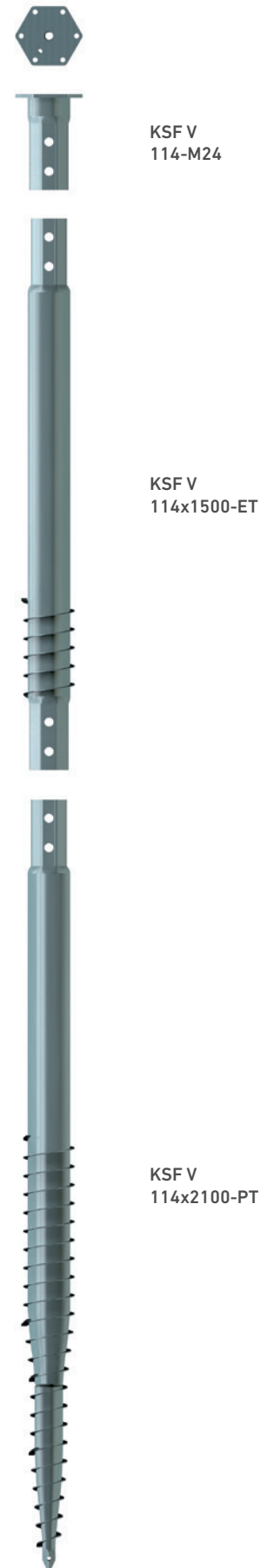
Applications

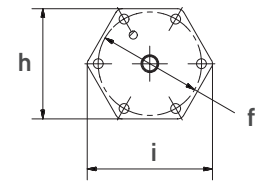


Accessories



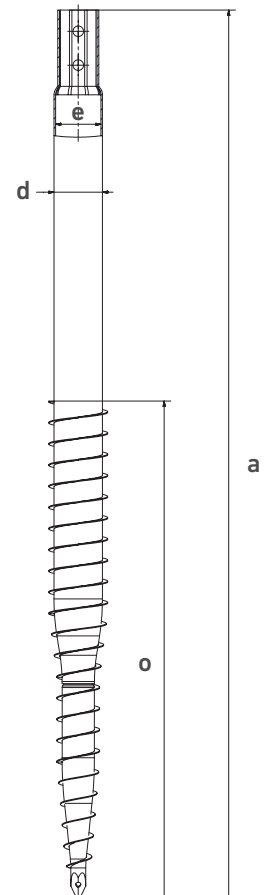
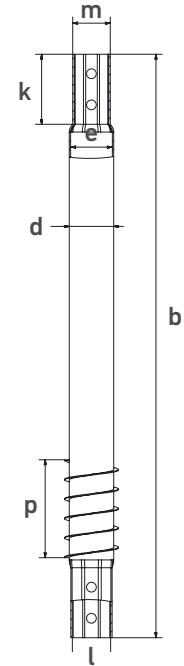
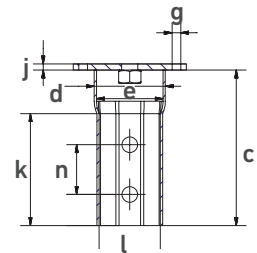
Connection Screw Set 4 pcs.
1.14 kg
Item No. 25605





Technical Data

	KSF V 114x2100-PT	KSF V 114x1500-ET	KSF V 114-M24
a	Length PT (mm) 2100	–	–
b	Length ET (mm) –	1500	–
c	Length M24 (mm) –	–	250
d	Shaft outer diameter (mm) 114.30	114.30	114.30
e	Inner diameter (mm) 107.10	107.10	107.10
f	Pitch circle diameter (mm) –	–	150
g	Pitch circle holes (mm) –	–	6 x Ø 14
h	Flange wrench size (mm) –	–	160
i	Flange outer diameter (mm) –	–	182
j	Flange thickness (mm) –	–	10
k	Octagon connection height (mm) 180	180	180
l	Octagon female inner diameter (mm) –	98.40	98.40
m	Octagon male outer diameter (mm) 96.70	96.70	–
n	Octagon hole center distance (mm) 80	80	80
o	Thread length PT (mm) 1100	–	–
p	Thread length ET (mm) –	250	–



Online Service

KSF V 114x2100-PT	KSF V 114x1500-ET	KSF V 114-M24
----------------------	----------------------	------------------

Webkey

V2560211D



V2560311D



V2560411D



Subject to technical change! Schematic representation!

Krinner Schraubfundamente GmbH | Passauer Straße 55 | D-94342 Straßkirchen
Phone: +49 9424 9401-80 | E-Mail: service@krinner.com | www.krinner.com